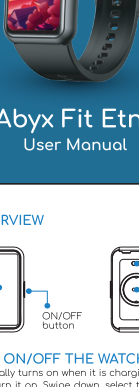




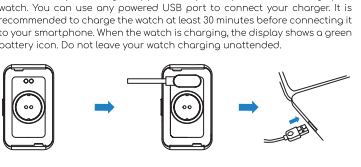
abyx



Abyx Fit Etna User Manual

PRODUCT OVERVIEW

EN



HOW TO TURN ON/OFF THE WATCH

The watch automatically turns on when it is charging or long press on the ON/OFF button to turn it on. Swipe down, select the "Settings" menu and select "power off" or long press on the ON/OFF button to turn the watch off.

HOW TO USE THE TOUCH SCREEN

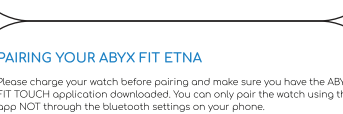
Navigate by swiping down, up, left, and right to cycle through the different screens and menus. Press on the screen to select functions or enter menus. Swipe right or press the ON/OFF button to deselect or return to the main menu.

HOW TO CHANGE THE WRISTBAND



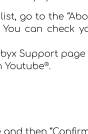
CHARGE YOUR ABYX FIT ETNA

Please use only the charger supplied with your Abyx Fit Etna to charge your watch. You can use any powered USB port to connect your charger. It is recommended to charge the watch at least 30 minutes before connecting it to your smartphone. When the watch is charging, the display shows a green battery icon. Do not leave your watch charging unattended.



TECH SPECS

Battery: Li-ion 3.7V 140mAh
Screen: 1.45" 320 x 172 Color IPS
Technology bluetooth: 5.1 BLE
Standby time: up to 15 days
Bands of frequency: 2402-2483MHz
Maximum radio-frequency power: 1.91dBm
Water resistance: IP68
Dimensions casing: 45 x 26.5 x 11 mm
Weight: 29g



www.abyx-fit.com

DOWNLOAD THE ABYX FIT TOUCH APP

Download the ABYX FIT TOUCH app on the App store for iOS devices and on the Google Play Store for Android devices.



Scan the QR code to visit our website



ABYX FIT TOUCH



Available on the App Store



Compatibility iOS 9.0 or more Android 7 or more



PAIRING YOUR ABYX FIT ETNA

Please charge your watch before pairing and make sure you have the ABYX FIT TOUCH application downloaded. You can only pair the watch using the app NOT through the bluetooth settings on your phone.

1. Make sure your phone bluetooth is turned on.
2. Open the ABYX FIT TOUCH application and go to the "Watch" tab.
3. Select "Connect a watch".
4. Select your watch from the list and confirm. Your watch is now paired to your phone and all data will be synced.

If you experience issues to identify your watch in the list, go to the "About" menu on your watch (see screen map on the right). You can check your watch MAC address to help you identify your watch. If you experience problems with the pairing, visit the Abyx Support page on www.abyx-fit.com or check our Abyx support videos on Youtube®.

HOW TO UNPAIR

1. Open the ABYX FIT TOUCH application.
2. Go to the "Watch" tab.
3. Select "Remove device" on the bottom of the page and then "Confirm".
4. Go to the bluetooth settings on your phone and forget the device. Your watch is now unpaired.

HOW TO RECONNECT YOUR ABYX FIT ETNA

To reconnect the watch, make sure to forget your watch on the bluetooth settings on your phone first and then follow the steps for pairing.

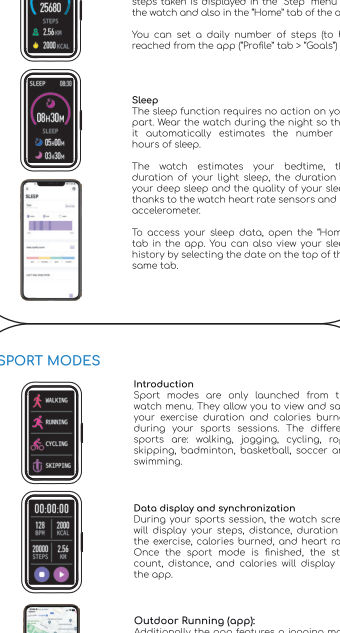
HOW TO CHANGE THE HOME SCREEN/WATCH FACE

Hold the watch main screen swipe left/right to choose and then press on the screen you like. On the ABYX FIT TOUCH application, go to the "Watch faces" on the device tab and select the watch face you like. You can download more watch faces by selecting the "More dials" menu in the application. To customized the watch face, press Edit on the right of the Watch faces then select the pictures you like from your phone. You can also choose the color and adjust the position of the time as you like directly from the app.

SCREEN MAP EXPLANATION

On the right you can find a quick map of the screens of the watch and how to navigate through them. The Abyx Fit Etna is a full touchscreen watch. Swipe down, up, left, and right to navigate through the different screens and press the screen to activate functions or enter a submenu. Firmware updates may slightly change the organization of the screens or the name of the menus and functions. Visit www.abyx-fit.com for up-to-date information if needed.

SCREEN MAP



MESSAGES & NOTIFICATIONS



Introduction
The Abyx Fit Etna displays the last five notifications received on your smartphone. Go to the Messages menu to view and swipe up to display the next notification. Your smartphone must display notifications and their contents in the status bar even when locked for notifications to appear on your Abyx Fit Etna screen.

ABYX FIT TOUCH app permissions
The app must be active and the bluetooth connection between your smartphone and the watch must not be interrupted. For the notifications to appear on the watch screen, the ABYX FIT TOUCH app must be authorized to run in the background and the notifications and their content must be displayed in the notification panel of your smartphone.



Please authorize the ABYX FIT TOUCH app to access the content below from your smartphone settings:
iOS: Access Notifications, Calls, bluetooth, Position (always active), Camera, Mobile data.
Android: Camera, Contacts, Call logs, Location, SMS, Storage, Phone, Mobile data.

STEP COUNTER AND SLEEP



Step counter
The watch automatically records the number of steps taken during the day. The number of steps taken is displayed in the "Step" menu of the watch and also in the "Home" tab of the app. You can set a daily number of steps (to be reached from the app ("Profile" tab > "Goals").



Sleep
The sleep function requires no action on your part. Wear the watch during the night so that it automatically estimates the number of hours of sleep. The watch estimates your bedtime, the duration of your light sleep, the duration of your deep sleep and the quality of your sleep thanks to the watch heart rate sensors and its accelerometer.



To access your sleep data, open the "Home" tab in the app. You can also view your sleep history by selecting the date on the top of this same tab.

SPORT MODES



Introduction
Sport modes are only launched from the watch menu. They allow you to view and save your exercise duration and calories burned during your sports sessions. The different sports are: walking, jogging, cycling, rope skipping, badminton, basketball, soccer and swimming.



Data display and synchronization
During your sports session, the watch screen will display your steps, distance, duration of the exercise, calories burned, and heart rate. Once the sport mode is finished, the step count, distance, and calories will display on the app.



Outdoor Running (app):
Additionally the app features a jogging mode allowing you to record your itinerary while running. This function uses your smartphone GPS and works independently from the watch. You can access this feature from "Outdoor running" in the first tab of the app. You can also view your sport data history from the same tab.



HEART RATE AND OXYGEN



Heart Rate (bpm)
Swipe to the "SpO2" menu and press the screen to have the watch record your heart rate. Heart rate data are shown in the "Home" tab of the app.



Blood pressure (mmHg)
Swipe to the "Blood pressure" menu and press the screen to have the watch estimate your blood pressure or press the Start measuring button of the blood pressure menu in the Home tab in the app. The number on the left corresponds to the systolic pressure, the average value of which is around 135mmHg. The number on the right corresponds to the diastolic pressure, the average value of which is around 85mmHg.



Oxygen level (SpO2)
Swipe to the "SpO2" menu and press the screen to have the watch estimate your oxygen saturation rate or press the "Start measuring" button of the blood oxygen menu in the "Home" tab in the app. A value of 98% means that each red blood cell present in your blood is made up of 98% of oxygenated hemoglobin and 2% of non-oxygenated hemoglobin. Normal values are between 95 and 100%.

CAMERA, RESET, ABOUT



Camera
You can use your watch as a remote control to take photos on your smartphone. Open the ABYX FIT TOUCH app and click on "Camera" in the "Watch" tab. Then shake the watch or touch the screen to take a photo. The ABYX FIT TOUCH app must be authorized to access the camera from the smartphone settings.



Reset
You must reset the watch if you experience any problem with data pairing, disconnection, or data synchronization. It is recommended to reset the watch before pairing it with a new smartphone. Go to the "Settings" menu and select "Reset" from your watch.



MAC Address
The About menu displays the MAC address of your watch. Please always provide this information if you contact the Abyx Fit support as well as your firmware version. The MAC address is the unique network identifier for your watch. It is displayed in the list of bluetooth devices detected by your smartphone can help you identify your watch during pairing.

MUSIC, FIND MY WATCH & PHONE



You can use your watch as a remote control to play or pause music and select the next or previous song on your smartphone. Make sure the ABYX FIT TOUCH app is open on your phone. The watch is not equipped with a built-in speaker.

Weather
Press "Weather" to display the weather forecast for the current day and the next six days (minimum / average / maximum temperature and climate). The ABYX FIT TOUCH app must be authorized to access your location data from your phone settings. Your location can be manually selected from the "Other" section in the app.

Alarm
You can set the time and schedule a repeating alarm only from the app ("Second tab > "Alarms"). You can turn on and off the alarms either from the app or the watch by swipe right or swipe down to display the control panel and press the "Settings" menu then select "Alarm".

MANAGE NOTIFICATIONS & PERMISSIONS

Turn apps notifications ON/OFF
You can choose which notifications you receive on your Abyx Fit Etna. To manage this, navigate to the "Watch" tab of your app and select the "Notifications", "Call alerts" and "SMS" menu. You can also totally mute the notifications by turning the DND (Do not disturb) mode from the same tab.

Display notifications on your watch
In order for your watch to display the contents of the notification you must set your notifications parameter so that the content of the notifications show on the lock screen and the status bar on your phone. If the DND mode or the power saving mode is activated on your phone, notifications will not be sync to the watch.

Notifications iOS:
1. Open your phone settings and go to the notifications section.
2. Select the app you want to receive the notifications from (Facebook, WhatsApp etc.) in the list of apps.
3. Click on "Notifications" from the selected app settings.
4. In the "Show Preview" menu select "Always".
5. Enable the "Background App Refresh".

iOS Permissions:
1. Select the app ABYX FIT TOUCH in your phone settings.
2. In the "Location section", select "While using the app".
3. Make sure the app have the following permissions: Bluetooth, Camera, Background App Refresh, and Cellular Data.

iOS Power saving:
The power saving mode might block the app to work in background. Please do not use the power saving mode while using the watch.

Android Notifications
1. Open your phone settings and go to the notifications section.
2. Select the app you want to receive the notifications from (Facebook, WhatsApp etc.) in the list of apps (you might need to click on "See all").
3. In the notification preview, make sure that "Show message" and "Message" is activated.
4. Please also make sure that the app ABYX FIT TOUCH is allowed to access your smartphone notifications.

Android Permissions
1. Open the "Apps" menu from your phone settings.
2. Select "ABYX FIT TOUCH" > Battery > Optimize battery usage.
3. Make sure the ABYX FIT TOUCH battery usage is not optimized.
4. Go back to the previous page and select "Permissions" and make sure the app is authorized to access Call logs, Camera, Contacts, Location, Phone, SMS, Storage.
5. From the "Apps" menu, select Notifications > Notifications > enable Show notifications and select "Show content" in the "Lock screen" section.

Android Power Saving mode
1. Open the "Battery" menu from your phone settings.
2. In the "Power mode" section, enable "High performance" and disable "Adaptive power saving".

Note: The instructions described above are valid for Samsung phones running Android 9. The organization and name of the settings menus may differ depending on the brand of your smartphone and the Android version installed on it.

Disposal and Recycling
Please be aware that it is the consumer's responsibility to properly dispose and recycle the Smart Watch and accompanying components. Do not dispose of the Smart Watch with common household waste, the Smart Watch unit is considered electronic waste and should be disposed of at your local electronic equipment collection facility. For more information, please contact your local electronic equipment waste management authority or the retailer where you bought the product.

EU Declaration of Conformity
Hereby, Onyx Group Limited declares that the radio equipment type "Smartwatch" ABYX-FIT-ETNA is in compliance with the Directive 2014/53/EU. The full text of the EU declaration of conformity is available at the following internet address: www.abyx-fit.com/certifications

Imported by: Trox Distribution, 18 Allée du Grand Totem Bâtiment Cloudy City 38070 Saint-Quentin-Fallevoye, France.
Ref: ABYX-FIT-ETNA-BLK, ABYX-FIT-ETNA-GRY, ABYX-FIT-ETNA-RPD
Batch: 220102609

ABYX®
5/F Heng Shan CTR, 145 Queen's Road East, Wanchai, Hong Kong

All brands or product names are or may be trademarks of their respective owners. Pictures and specifications are not contractual. 2 years warranted. Made in PRC. Les marques citées sont des marques déposées par leur fabricant respectif. Photos et caractéristiques non contractuelles. Garantie : 2 an. Fabriqué en PRC. De vermeldde merken zijn gedeponeerde merken door hun respectievelijke producent. Foto's en specificaties zijn niet contractueel. Geproduceerd in China. Garantie: 2 jaar. Die zilverden merken sind durch die jeweiligen Hersteller eingetragene Marken. Fotos und technische Daten sind unverbindlich. Hergestellt in China. Garantie: 2 Jahr.